

ABRASIVE

S E R I E S



ABRASIVE

S E R I E S

Inspired by the Operator...



Light weight aluminum reinforced nylon housing



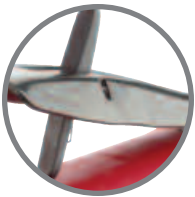
Ergonomic, composite handle with textured soft grip



1 HP motor



Heavy duty three piece double tapered collet



Contoured throttle lever with lock

A Grind with you in Mind

Through industry research and operator input, we have engineered an abrasive tool program that truly delivers tools for the way you work! The Signature Series Abrasive Line is comprised of Straight Die Grinders, Extended Die Grinders, Angle Die Grinders, Angle Wheel Grinders and Cutoff Tools. The Signature Series Abrasive line of tools is engineered with an outstanding power to weight ratio and high speeds to handle a wide range of applications. They also feature many ergonomic innovations for operator comfort and safety. These tools have the power and the features that make them a valuable asset to any grinding, sanding, and deburring applications.

Comfort. Performance. Value

The Signature Series Abrasive Line touts up to a 1 HP motor with a free speed range from 12,000 to 25,000 rpm delivering the power needed for both speed and accuracy. A contoured throttle lever with lock gives an operator simple, one-hand operation while the ergonomic, composite handle with textured soft grip makes handling these tools truly comfortable. The Signature Series Abrasive Line boasts a heavy-duty three piece double tapered collet, a front or rear exhaust and a lightweight housing for continued operator comfort.

The Signature Series



Inspired by the operator, designed by Sioux Tools. Since 1914, Sioux Tools has been committed to bringing productive solutions to the pneumatic power tool industry.

Signature Series is an innovative pneumatic power tool program created through the implementation of next generation ergonomics, productivity enhanced features, value and accuracy.

Through industry research and operator input, we have engineered a program that truly delivers tools for the way you work!



Designed for the way you work!



Foundry Applications

Tool and Die Makers

Metal Fabrication

General Industrial

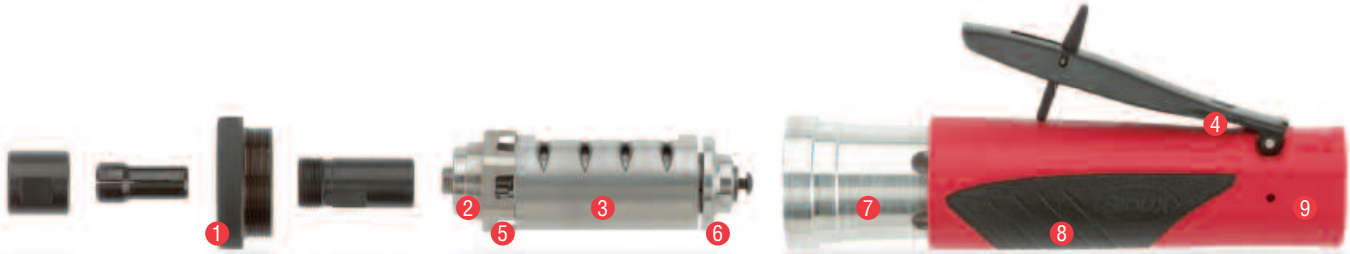
Aircraft Maintenance

Trailer Manufacturing

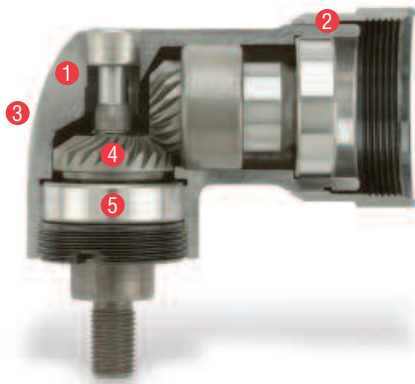
ABRASIVE

S E R I E S

Signature Series Abrasive Features



- 1 Available with Front or Rear Exhaust – Can be easily converted from front to rear exhaust with optional kit Part Number: SDG-EXH
- 2 Ball Bearing Construction
- 3 Precision Machined Powdered Metal Cylinder
- 4 Teasing Throttle
- 5 Positive Rotor Spacing – Rotor spacing remains secure and does not rely on a press fit
- 6 Precision Machined Steel End Plates
- 7 Aluminum Housing with glass filled nylon cover
- 8 Over Molded Comfort Grip (Provides a secure grip)
- 9 Built-in Speed Control



- 1 Steel Angle Head – Maintains structural integrity under load resulting in better gear engagement and longer life
- 2 Adjustable Angle Head – Infinite 360 Degree positioning
- 3 Grease Fitting for easy lubrication
- 4 Precision Machined Heat Treated, Spiral Bevel Gears for smooth operation and long life
- 5 Heavy Duty Ball and Needle Bearing Construction



- 1 Side Handle – Can be positioned for left or right hand operation
- 2 Adjustable Guard





Die Grinders

Model Number	Free Speed	Weight		Length		Air Consumption		Sound Level	Collet Size	Exhaust
	rpm	lb	kg	In.	mm	scfm	l/s	dB(A)		
Straight Die Grinders (1HP)										
SDG10S25F	25,000	1.65	0.75	7.50	190	30	14.2	77.7	1/4"	Front
SDG10S25M6F	25,000	1.65	0.75	7.50	190	30	14.2	77.7	6mm	Front
SDG10S25R	25,000	1.65	0.75	7.50	190	30	14.2	77.7	1/4"	Rear
SDG10S25M6R	25,000	1.65	0.75	7.50	190	30	14.2	77.7	6mm	Rear
SDG10S18F	18,000	1.65	0.75	7.50	190	30	14.2	77.7	1/4"	Front
SDG10S18M6F	18,000	1.65	0.75	7.50	190	30	14.2	77.7	6mm	Front
SDG10S18R	18,000	1.65	0.75	7.50	190	30	14.2	77.7	1/4"	Rear
SDG10S18M6R	18,000	1.65	0.75	7.50	190	30	14.2	77.7	6mm	Rear
SDG10S12F	12,000	1.65	0.75	7.50	190	30	14.2	77.7	1/4"	Front
SDG10S12M6F	12,000	1.65	0.75	7.50	190	30	14.2	77.7	6mm	Front
SDG10S12R	12,000	1.65	0.75	7.50	190	30	14.2	77.7	1/4"	Rear
SDG10S12M6R	12,000	1.65	0.75	7.50	190	30	14.2	77.7	6mm	Rear

SDG Directional Exhaust Conversion Kit Available. Part Number SDG-EXH

Extended Die Grinders (1HP)

SXG10S23R	23,000	2.20	1.00	12.10	308	30	14.2	77.7	1/4"	Rear
SXG10S23M6R	23,000	2.20	1.00	12.10	308	30	14.2	77.7	6mm	Rear
SXG10S18R	18,000	2.20	1.00	12.10	308	30	14.2	77.7	1/4"	Rear
SXG10S18M6R	18,000	2.20	1.00	12.10	308	30	14.2	77.7	6mm	Rear
SXG10S12R	12,000	2.20	1.00	12.10	308	30	14.2	77.7	1/4"	Rear
SXG10S12M6R	12,000	2.20	1.00	12.10	308	30	14.2	77.7	6mm	Rear

Collet Sizes Available as Accessory

- 1/8" ColletPart Number: 74072
- 3/16" ColletPart Number: 74073
- 1/4" ColletPart Number: 74074
- 3/8" ColletPart Number: 68030
- 3mm ColletPart Number: 74075
- 6mm Collet.....Part Number: 74076
- 8mm ColletPart Number: 68056





Right Angle Type 27 Wheel Grinders And Sander

Model Number	Free Speed	Wheel Capacity		Weight		Length		Air Consumption		Sound Level	Spindle Thread
	rpm	in.	mm	lb	kg	In.	mm	scfm	l/s	dB(A)	
SWG10S183R	18,000	3.0	75	3.00	1.34	9.0	230	30	14.2	77.7	3/8-24
SWG10S124R	12,000	4.0	100	3.00	1.37	9.0	230	30	14.2	77.7	3/8-24
SWG10S1245R	12,000	4.5	115	3.25	1.49	9.0	230	30	14.2	77.7	5/8-11
SAS10S125R	12,000	5.0	125	2.6	1.21	9.0	230	30	14.2	77.7	3/8-24

Right Angle Die Grinders

Model Number	Free Speed	Weight		Length		Air Consumption		Sound Level	Collet Size	Exhaust
	rpm	lb	kg	In.	mm	scfm	l/s	dB(A)		
SAG10S18R	18,000	2.65	1.20	9.00	230	30	14.2	77.7	1/4"	Rear
SAG10S18M6R	18,000	2.65	1.20	9.00	230	30	14.2	77.7	6mm	Rear
SAG10S12R	12,000	2.65	1.20	9.00	230	30	14.2	77.7	1/4"	Rear
SAG10S12M6R	12,000	2.65	1.20	9.00	230	30	14.2	77.7	6mm	Rear

Collet Sizes Available as Accessory

- 1/8" ColletPart Number: 74072
- 3/16" ColletPart Number: 74073
- 1/4" ColletPart Number: 74074
- 3/8" ColletPart Number: 68030
- 3mm ColletPart Number: 74075
- 6mm Collet.....Part Number: 74076
- 8mm ColletPart Number: 68056



Angle Grinders Will Be Available
In August 2006





Cutoff Tools (1HP)

Model Number	Free Speed	Weight		Length		Air Consumption		Sound Level	Wheel Size	Exhaust
	rpm	lb	kg	In.	mm	scfm	l/s	dB(A)		
SCO10S253F	25,000	2.00	0.90	8.25	210	30	14.2	77.7	3"	Front
SCO10S253R	25,000	2.00	0.90	8.25	210	30	14.2	77.7	3"	Rear



Abrasive safety

The following instructions are important and should be followed explicitly but cannot cover all contingencies. Good judgment is always required.

Proper eye protection must be worn at all times by tools user and bystanders. Keep hands and other body parts away from grinding wheels and sanding pads and disks to prevent cutting or pinching. Wear protective clothing and gloves to protect hands. Secure work; use clamps or vise to hold work. Be sure actuator is off before hooking up air. Check the speed rating of the accessory or the speed printed on the wheel. This speed must be greater than the name plate speed of the grinder and the actual speed of the grinder as measured with a tachometer. Be sure tool has come to a complete stop before setting it aside. Always remove tool from air supply and activate trigger to bleed air line before making any adjustments, changing accessories, or doing any maintenance or service on tool.

Grinders

The grinder is to be operated with an appropriate guard at all times when a grinding wheel is used. Replace a damaged guard. The guard is to be the proper one for the wheel being used. Be certain that all wheel, flanges, nuts and related equipment are in good shape, the proper ones for the type and size of wheel being used, and are securely fastened. Tighten collet securely. Match wheel or accessory shaft diameter to chuck or collet. Only grind metals if the area is free of combustible or explosive materials or vapors. Do not use cut off wheels or router bits with die grinders. If the normal sound of the grinder changes, or if it vibrates excessively, shut it off immediately, remove the wheel, and check speed with tachometer. Check the wheel for damage before mounting, look for chips and cracks. Handle wheels carefully to avoid dropping or bumping. Protect wheels from extremes of temperature and humidity. Check wheels immediately after any unusual occurrence that may damage wheels.



siouxtools.com



250 Snap-on Drive
P.O. Box 1596
Murphy, North Carolina USA 28906
PH: 828.835.9765
FAX: 828.835.9685
TOLL FREE: 866.259.7291
TOLL FREE FAX: 800.722.7236

Benelux
Tel.: (N) 31 (0) 20 568 26 63
(B) 32 (0) 14 23 19 67
Fax: (N) 31 (0) 20 568 26 60
(B) 31 (0) 14 23 26 27
e-mail: snap@snap-on.nl

Latin America
Tel.: 305-271-0944
Fax: 305-271-7152
e-mail: latinamerica.caribbean@snapon.com

Germany
Tel.: 49 2104 9509-0
Fax: 49 2104 9509-99
e-mail: snapon.industrial@snapon.com

Italy
Tel.: 00 39 02 66 04 53 70
Fax: 00 39 02 61 29 78 15
e-mail: indus.italia@snapon.com

United Kingdom
Tel.: 44 (0) 1536-413904
Fax: 44 (0) 1536-413874
e-mail: industrialuk@snapon.com

Asia
Tel.: 65-6451-5570
Fax: 65-6451-5574
email: esales.sg@snapon.com

Australia
Tel.: 61 2 9837 9100
Fax: 61 2 9624 2578
e-mail: SOTA.customerservice@snapon.com

Distributed By:

